

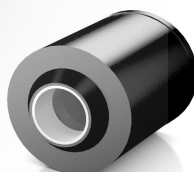


FEASA™ LED Spectrometer S2

The Innovative Solution for Testing LEDs



Feasa's LED Spectrometer Model S2



The Feasa LED Spectrometer has been designed specifically to allow testing of LEDs on populated PCBs where access is limited.

The Feasa LED Spectrometer includes customised on-board firmware for automatic colour calculation in multiple colour spaces. It uses a similar easy-to-use set of commands as the Feasa LED Analyser.

When your quality demands Traceable Measurements the Feasa LED Spectrometer provide an ideal solution. Traceable Measurements can be obtained for Luminous Flux (Lumens), Luminous Intensity, Luminance and Wavelength.

The Spectrometer is compatible with all Feasa LED Analysers to ensure production setup meets customer requirements.

- ◆ Wavelength Operating Range - 380nm to 780nm
- ◆ Automatic exposure control and Range Selection built-in
- ◆ Ideal for testing RGB LED's and Colour Mixing
- ◆ Simple and easy Command structure
- ◆ Can be controlled by User Programs.
- ◆ Measurements are easily transferrable to the existing range of Feasa LED Analysers
- ◆ Daisy Chain bus to control multiple Spectrometers through a single Port (USB or Serial)
- ◆ Measure PWM-Controlled LEDs
- ◆ External Measurement Trigger Input
- ◆ Store up to 450 Measurements in memory for LED profiling (Sequence Capture)



Feasa Enterprises Ltd.

Castletroy • Limerick • Ireland

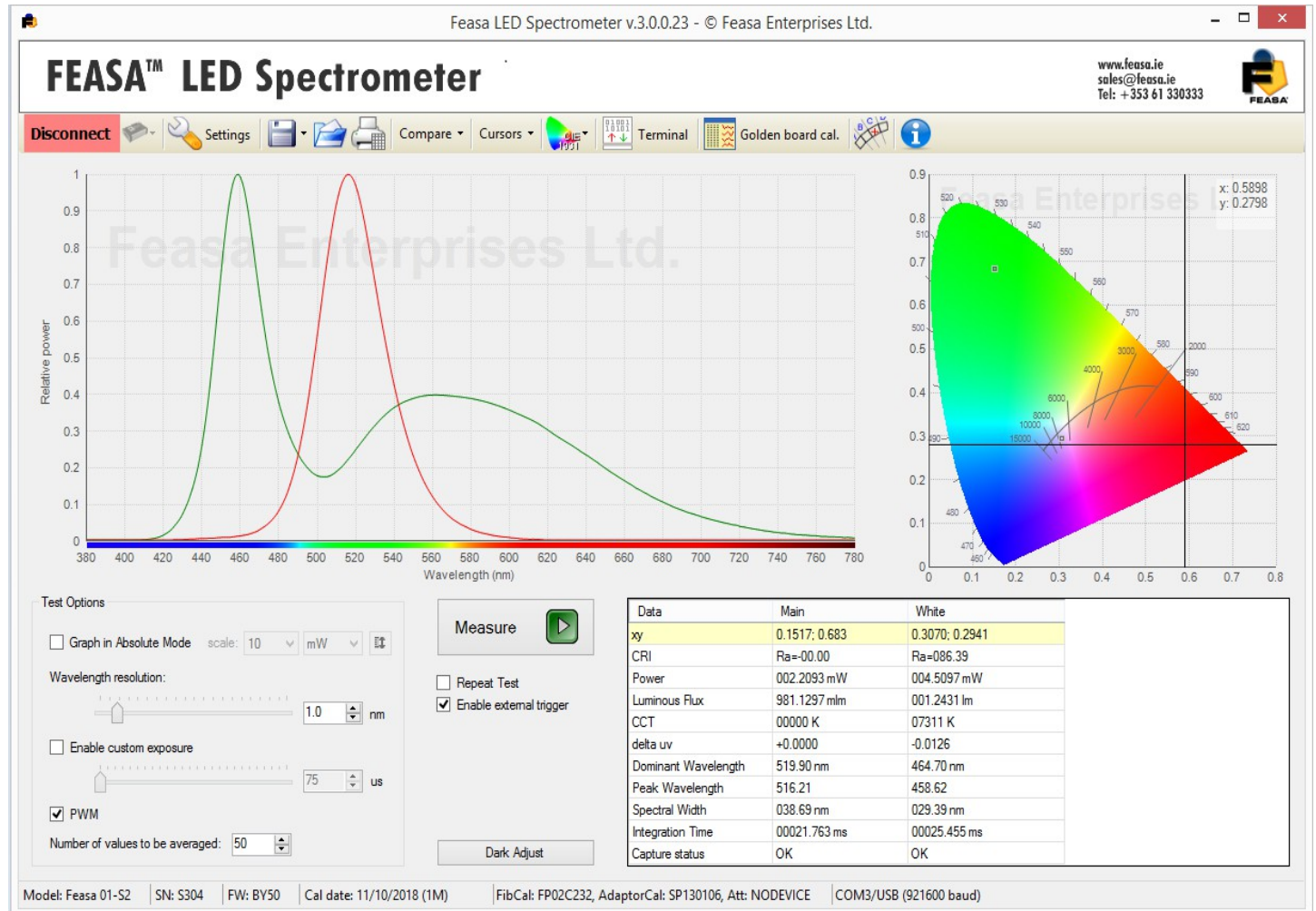
Telephone: + 353 61 330333 - Fax : + 353 61 330452 - Website: www.feasa.ie

Registered Office: Feasa Enterprises Limited, Holland Road, National Technology Park, Castletroy, Co.Limerick, Ireland.
Registered in Ireland, No. 106933. Copyright © 2011 Feasa Enterprises Limited. All rights reserved.



FEASA™ LED Spectrometer S2

The Innovative Solution for Testing LEDs



Included Software

Feasa User Graphical Display Program
 Datalogging, Compare Function
 Terminal and Scripting Program export CSV format
 Compatible with Windows 10, 8, 7, Vista, XP



Feasa Enterprises Ltd.

Castletroy • Limerick • Ireland

Telephone: + 353 61 330333 - Fax : + 353 61 330452 - Website: www.feasa.ie

Registered Office: Feasa Enterprises Limited, Holland Road, National Technology Park, Castletroy, Co.Limerick, Ireland.
Registered in Ireland, No. 106933. Copyright © 2011 Feasa Enterprises Limited. All rights reserved.



FEASA™ LED Spectrometer S2

The Innovative Solution for Testing LEDs

SPECIFICATIONS

OPTICAL Spectral Range Minimum Wavelength Step Integration Time	380nm to 780nm 0.1nm 10µs to 4s
ACCURACY xy Chromaticity ^{*1, *2} Power (Watts) ^{*1, *2} Luminous Flux (Lumens) ^{*1, *2} Peak Wavelength	±0.003 10% 10% ±1nm
REPEATABILITY Wavelength Chromaticity xy Intensity	±0.5nm ±0.0005 < 1%
ELECTRICAL USB 2.0 Interface RS232 Serial Interface	Current drawn 180mA
PHYSICAL Dimensions of Spectrometer Fiber Length Fiber Diameter Operating Temperature Range	93mm x 57mm x 75mm (ex. brackets) 0.6m 5.1mm, incl. cladding 0°C to +40°C

^{*1} – Immediately after calibration relative to the calibration standard

^{*2} – When calibrated with a Miniature Integrating Sphere.

ORDERING INFORMATION

Feasa Spectrometer Miniature Integrating Spheres Luminous Intensity Adaptors Luminance Adaptors Custom Spheres on request	Part No.: Feasa S2 SP13, SP23 CD04, CD08 LU04, LU07
---	--



Feasa Enterprises Ltd.

Castletroy • Limerick • Ireland

Telephone: + 353 61 330333 - Fax : + 353 61 330452 - Website: www.feasa.ie

Registered Office: Feasa Enterprises Limited, Holland Road, National Technology Park, Castletroy, Co.Limerick, Ireland.

Registered in Ireland, No. 106933. Copyright © 2011 Feasa Enterprises Limited. All rights reserved.